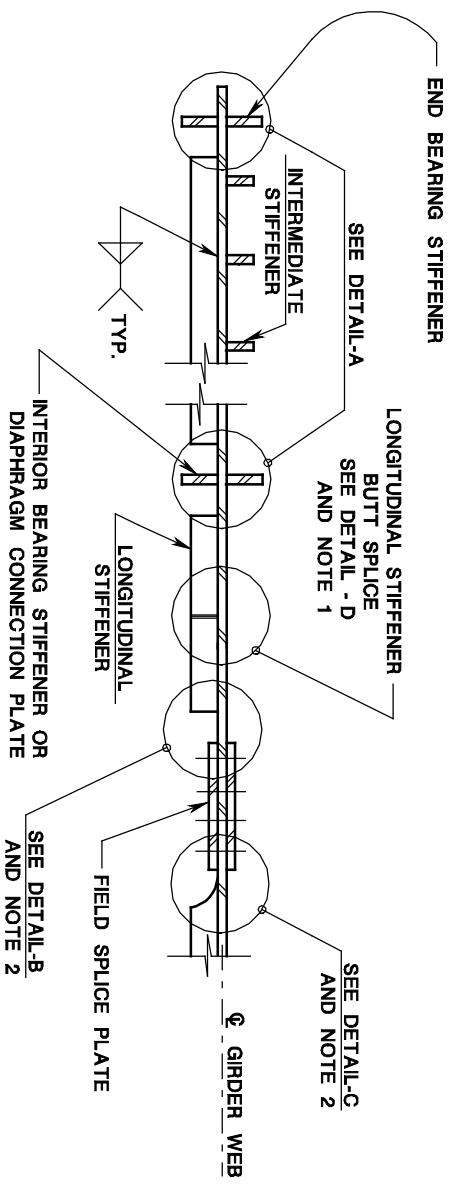


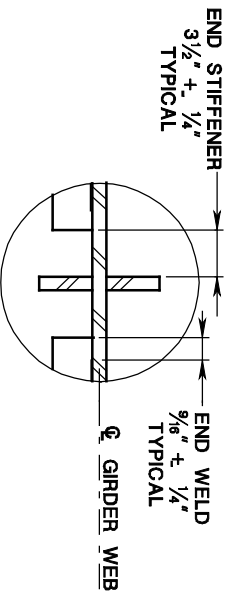
# LONGITUDINAL/TRANSVERSE STIFFENER INTERSECTION DETAILS

ISSUED: 2009

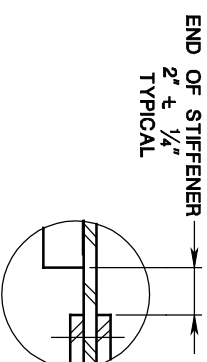
PLATE  
3.9-19



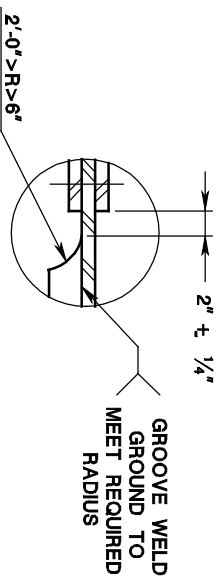
## PLAN VIEW



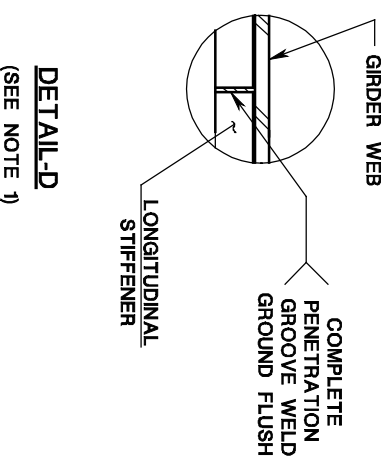
**DETAIL-A**



**DETAIL-B**



**DETAIL-C**



**DETAIL-D**  
(SEE NOTE 1)

## NOTES:

1. PERFORM NON-DESTRUCTIVE TESTING ON LONGITUDINAL STIFFENER BUTT WELDS PRIOR TO ATTACHMENT TO GIRDER.
2. USE DETAIL-C. DETAILS A AND B ARE APPLICABLE ONLY IN THE COMPRESSION ZONE. THERE SHALL BE NO CATEGORY D, E, OR F DETAILS IN TENSION ZONE.